

FSM og rdt.

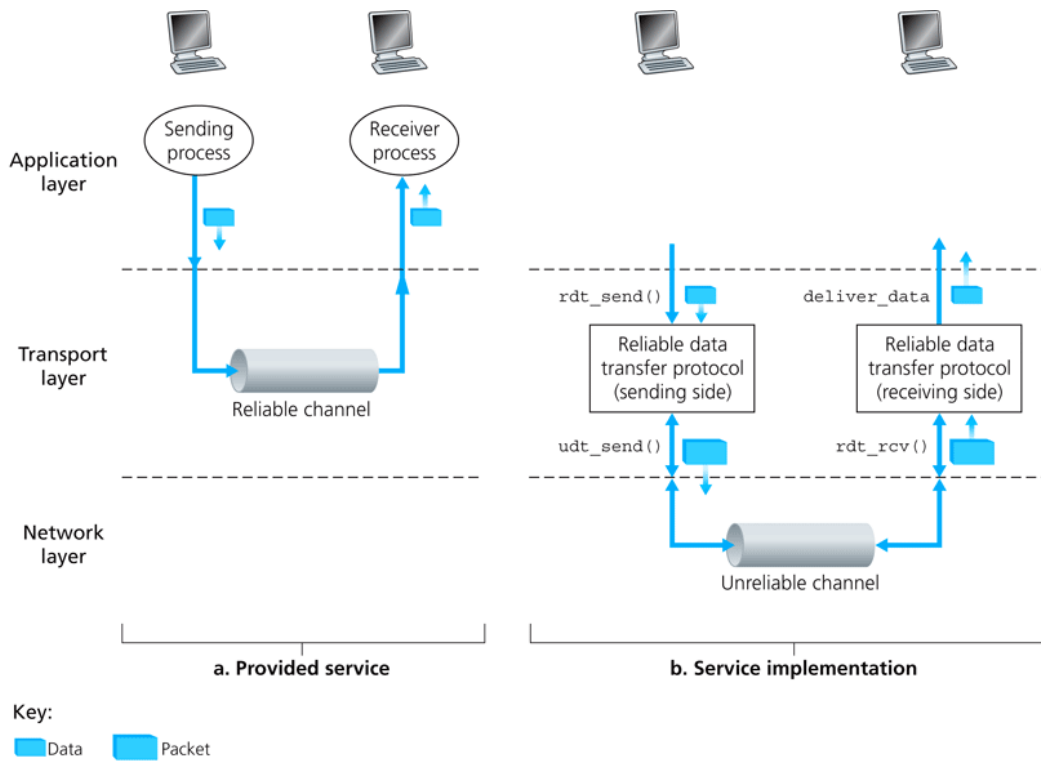


Figure 3.8 ♦ Reliable data transfer: Service model and service implementation

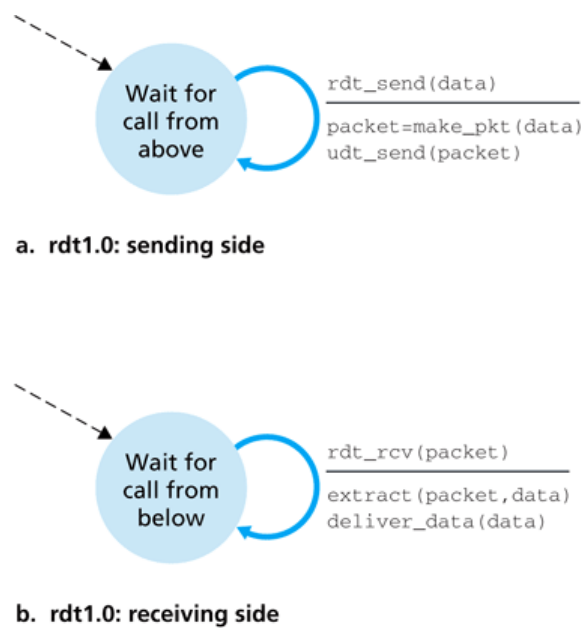
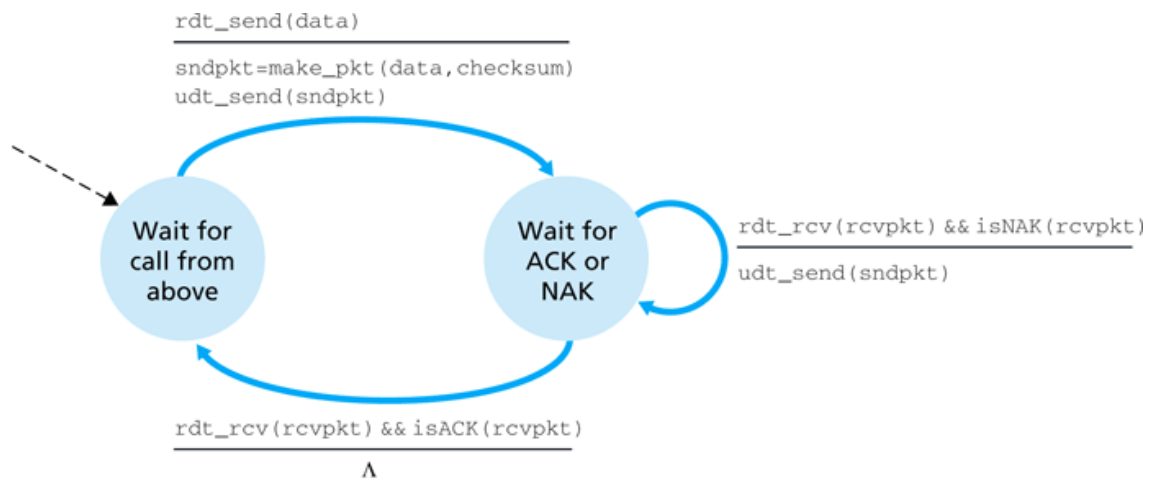
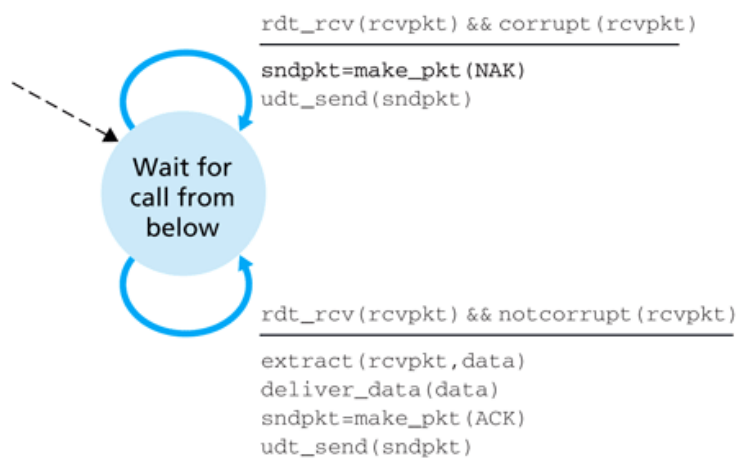


Figure 3.9 ♦ rdt1.0 – A protocol for a completely reliable channel



a. rdt2.0: sending side



b. rdt2.0: receiving side

Figure 3.10 ♦ rdt2.0—A protocol for a channel with bit errors

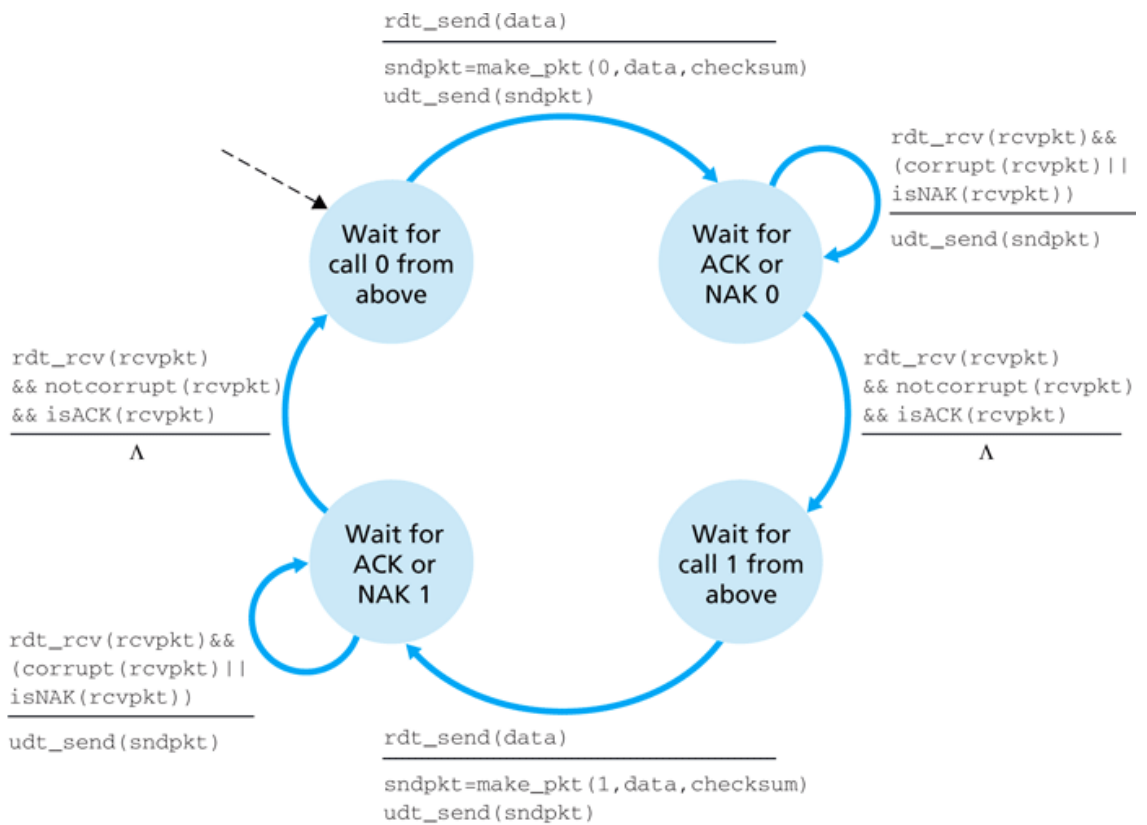


Figure 3.11 ♦ rdt2.1 sender

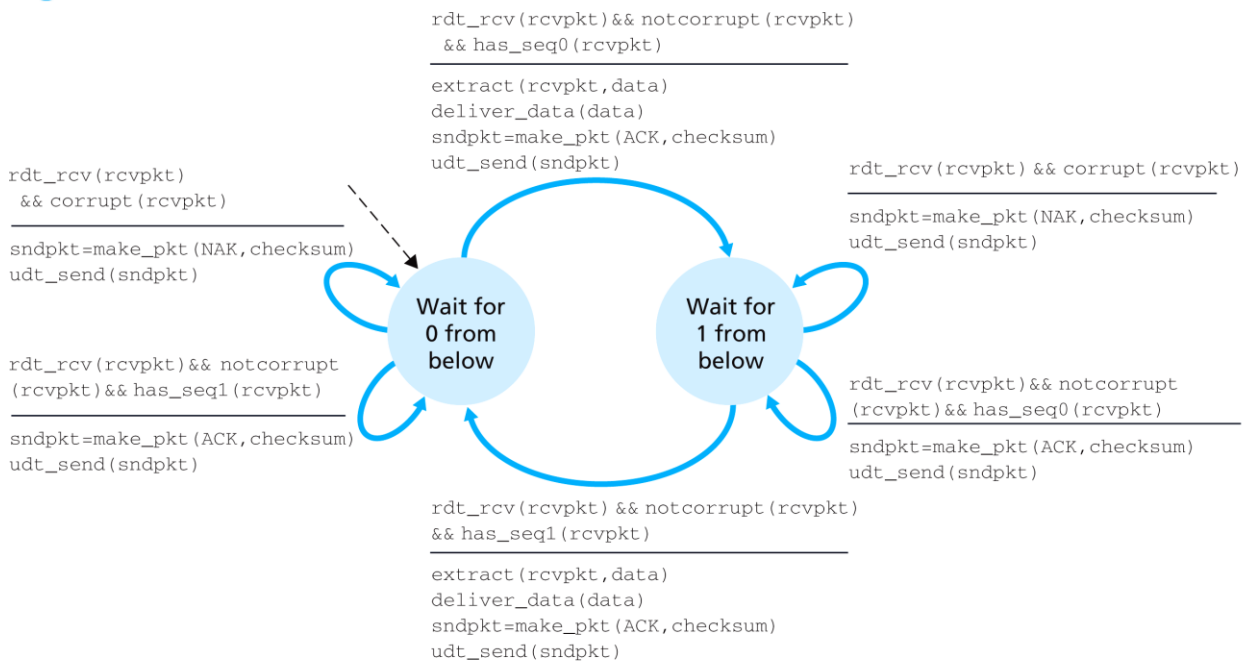


Figure 3.12 ♦ rdt2.1 receiver

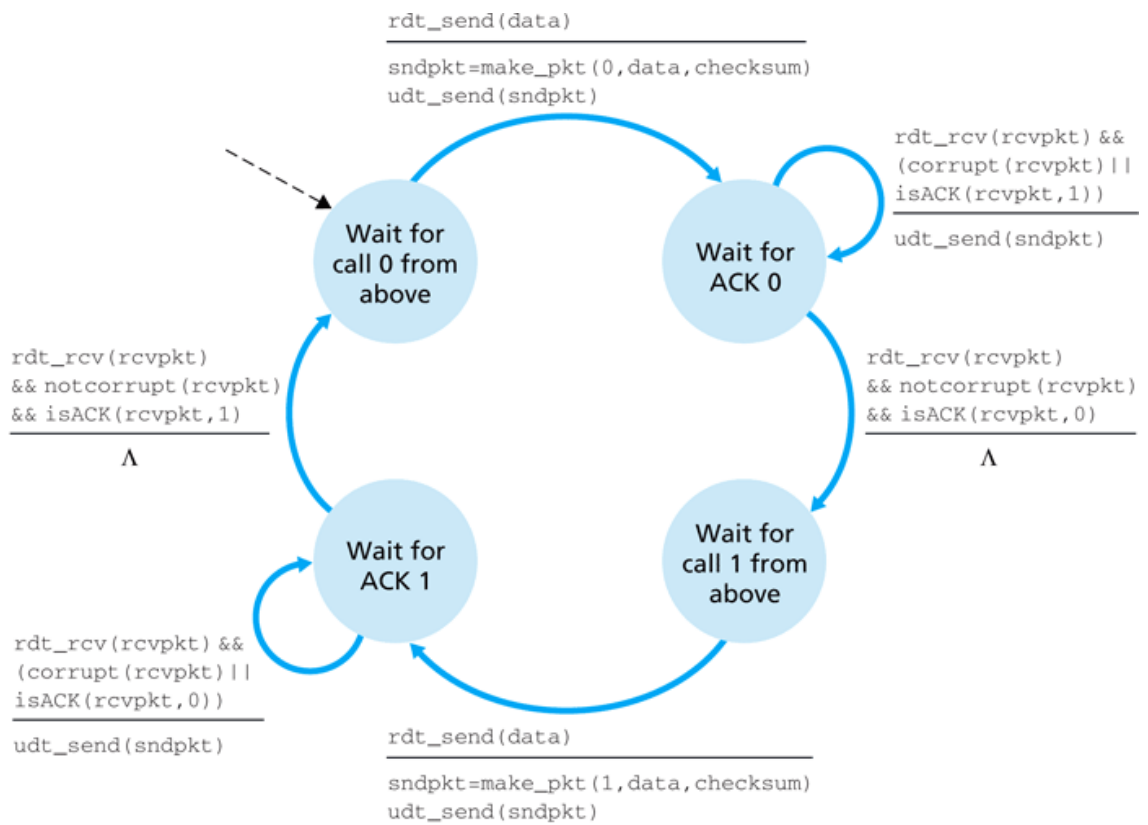


Figure 3.13 ♦ rdt2.2 sender

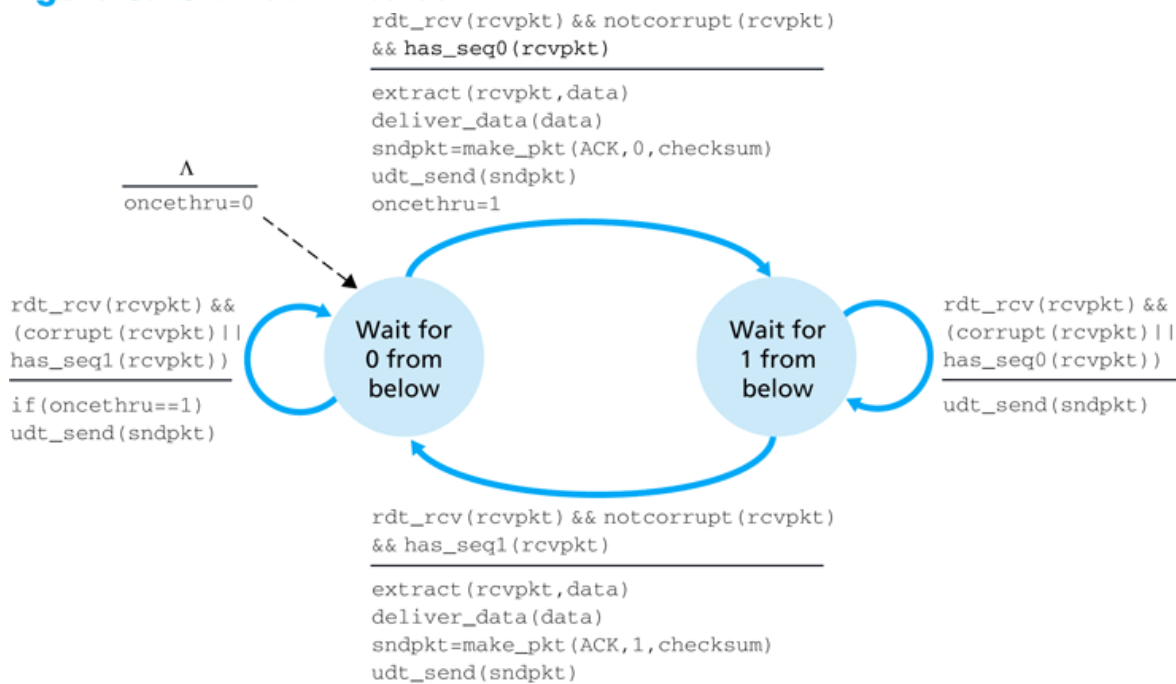


Figure 3.14 ♦ rdt2.2 receiver

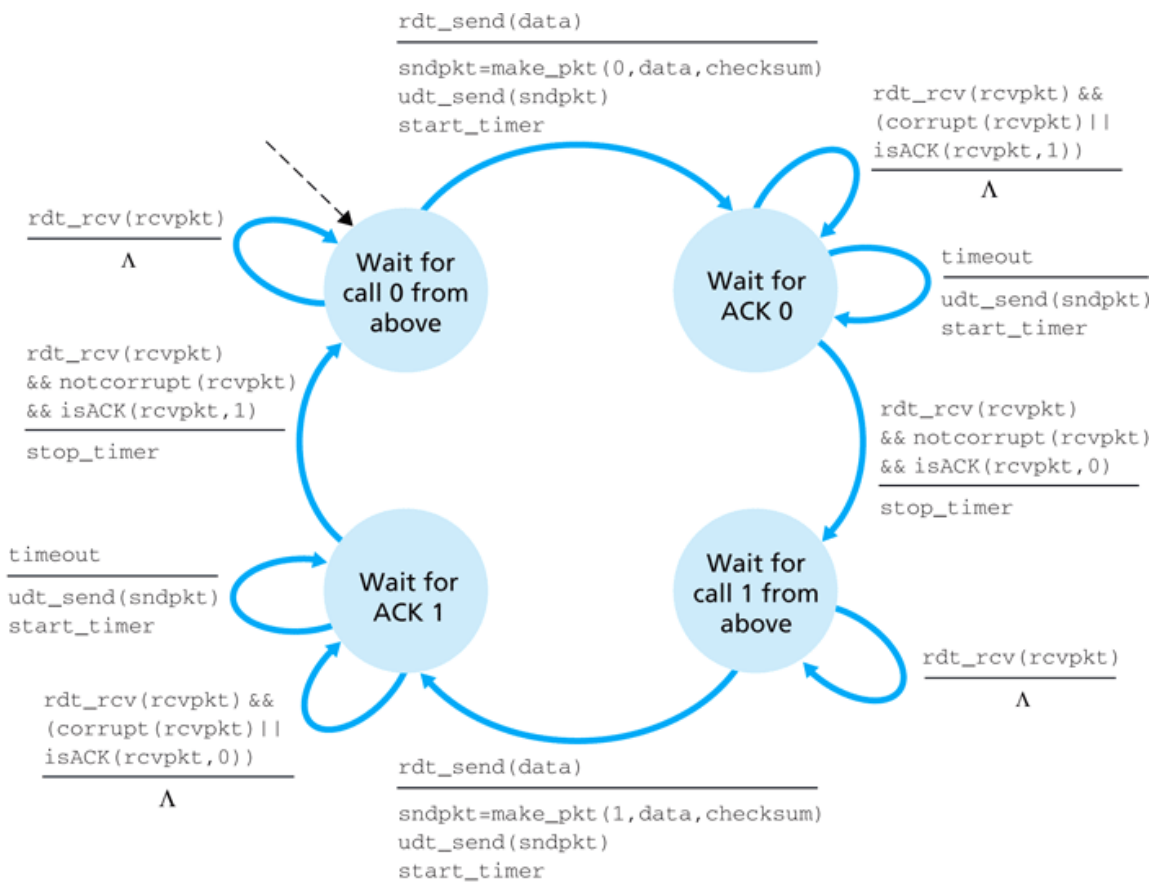


Figure 3.15 ♦ rdt3.0 sender

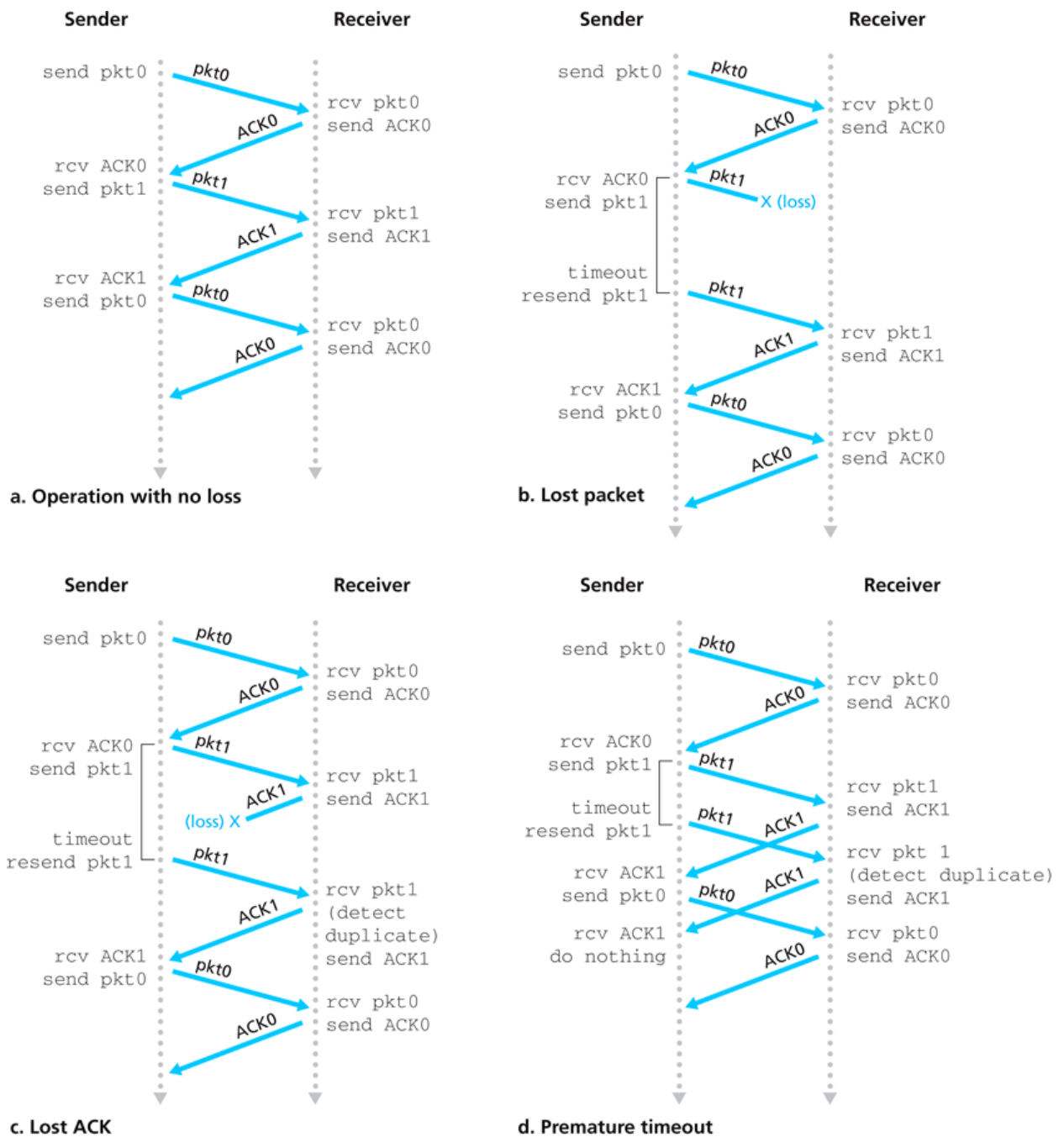


Figure 3.16 ♦ Operation of rdt3.0, the alternating-bit protocol